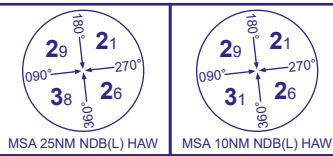


INSTRUMENT APPROACH - ICAO

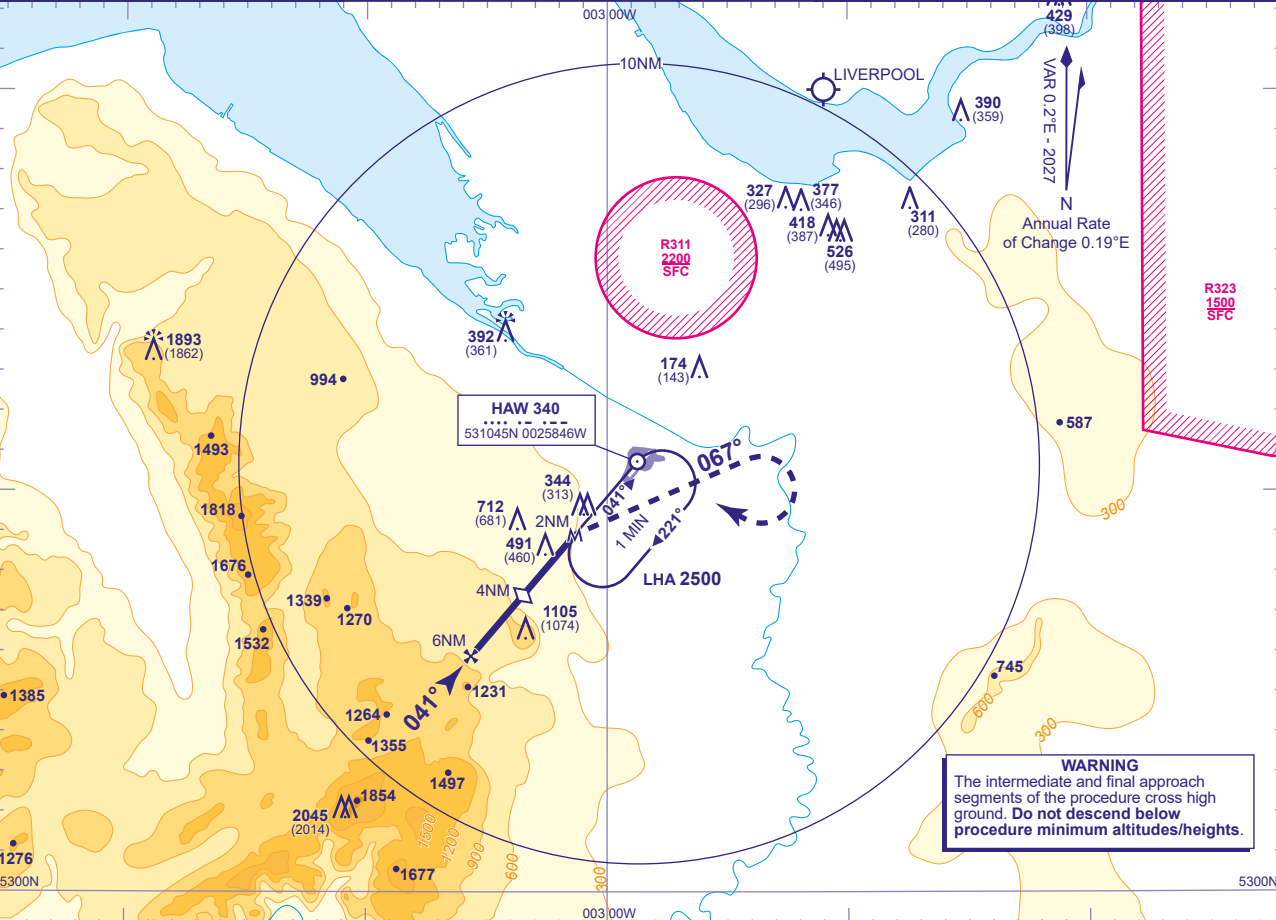
HAWARDEN  
SRA RTR 2NM  
RWY 04  
(ACFT CAT A,B,C)



TWR 124.955	HAWARDEN TOWER
RAD 120.055, 130.015*	HAWARDEN RADAR
ATIS 125.430	HAWARDEN INFORMATION
*As directed by ATC, Not continuously monitored	

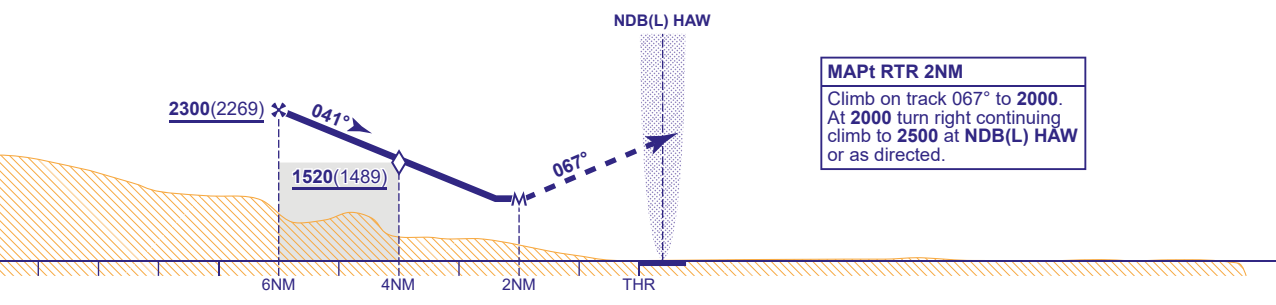
AD ELEVATION	45
THR ELEVATION	31
OBSTACLE ELEVATION	2045 AMSL (2014) (ABOVE THR)
BEARINGS ARE MAGNETIC	

TRANSITION ALTITUDE	5000
---------------------	------



RADAR ADVISORY HEIGHTS Gradient 6.1%, 375FT/NM			
NM	5.0	4.0 (SDF)	3.0
ALT(HGT)	1920(1889)	1540(1509)	1170(1139)

Initial and intermediate approach as directed by radar.



Aircraft Category		A	B	C	Rate of descent	G/S KT	160	140	120	100
OCA (OCH)	Procedure	970(939)	970(939)	970(939)		FT/MIN	990	860	740	620
VM(C)OCA (OCH AAL)	Total Area	800(755)	900(855)							
	East of RWY 04/22	700(655)	800(755)	1500(1455)						

CHANGE (11/25): MSA INCREASES 25NM SE/SW QUADRANT, 10NM SE QUADRANT: MAG VAR. MAG TRACKS.